



**TAIYO KOGYO CO.,LTD.**  
Printed Circuit Company

# Bus Bar Embedded PCB Capacitor Board for EV application

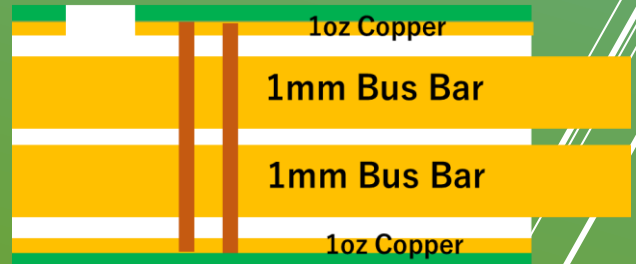


**200A**

## PCB Specification

- Inner - 1mm(28.5oz) Bus Bar
- External – 1oz
- 4 Layers
- ENIG
- Bus Bar Terminals
- Cavity Structure

## PCB Layer Stackup



## Features:

- High Current handling on PCB – 200A
- High Heat Dissipation / Thermal Management
- Terminals – Integrating +/- terminals into PCB
- Cavity – Directly connect with internal bus bar / possible to fasten screws at Cavity



Please visit our website  
for more details.

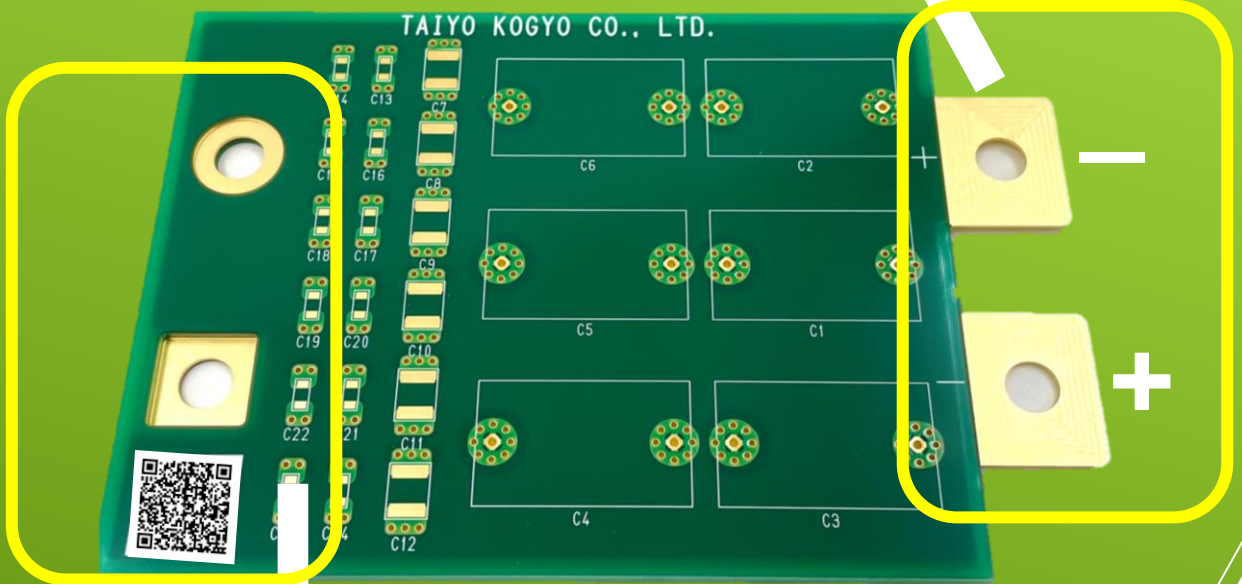


**TAIYO KOGYO CO.,LTD.**  
**Printed Circuit Company**

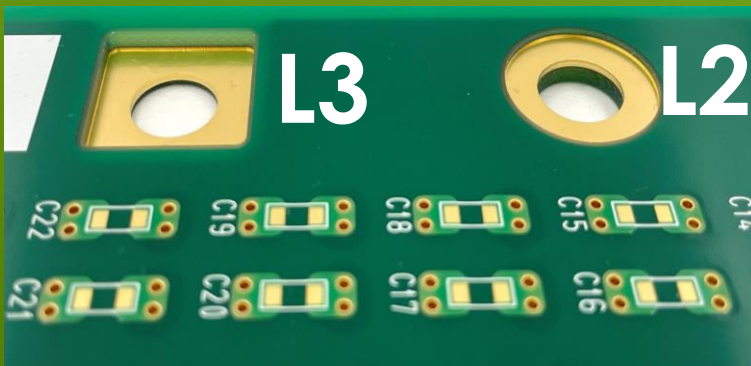
- Exposing bus bar on different layer
- Possible to fasten screws
- Eliminating cables
- Integrating external bus bar into PCB



Terminal



Cavity



- Exposing bus bar from different layer
- Possible to fasten screws
- Cavity shape is flexible.